

STEM² @ PERSHING

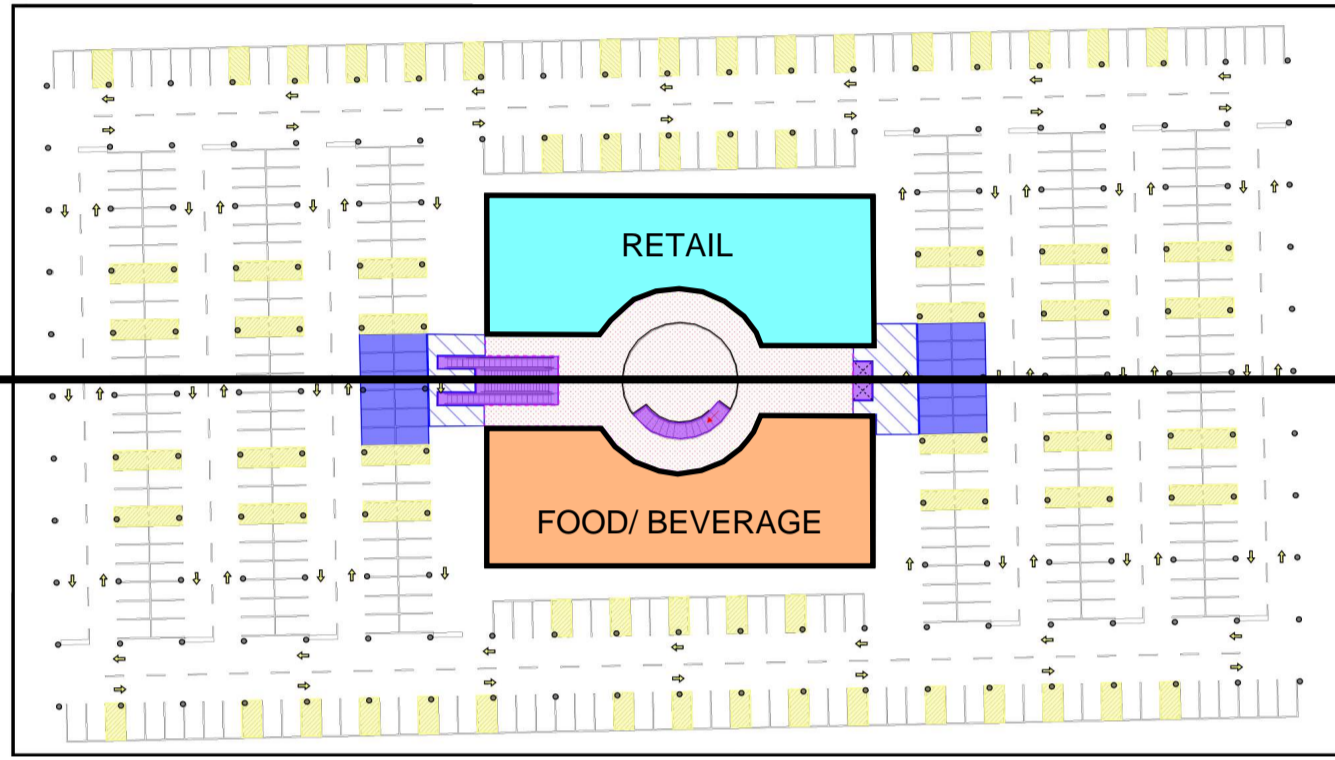
A revitalization of Pershing Square in Los Angeles, CA



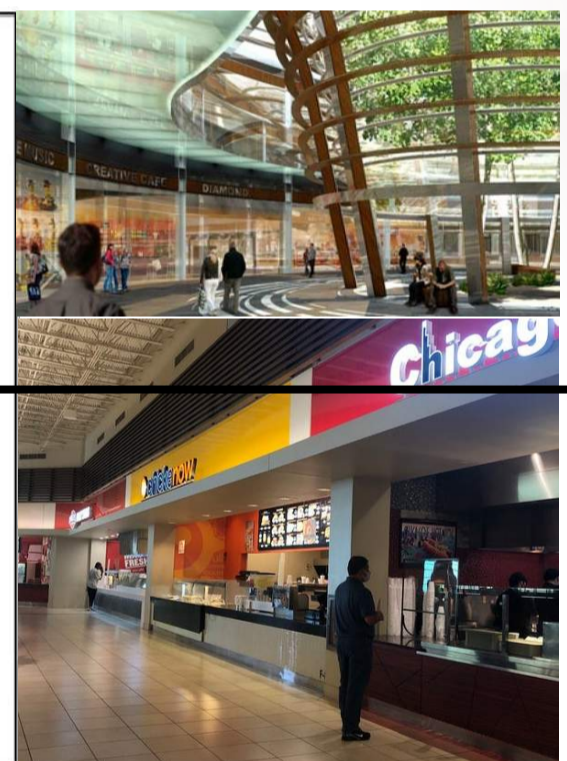
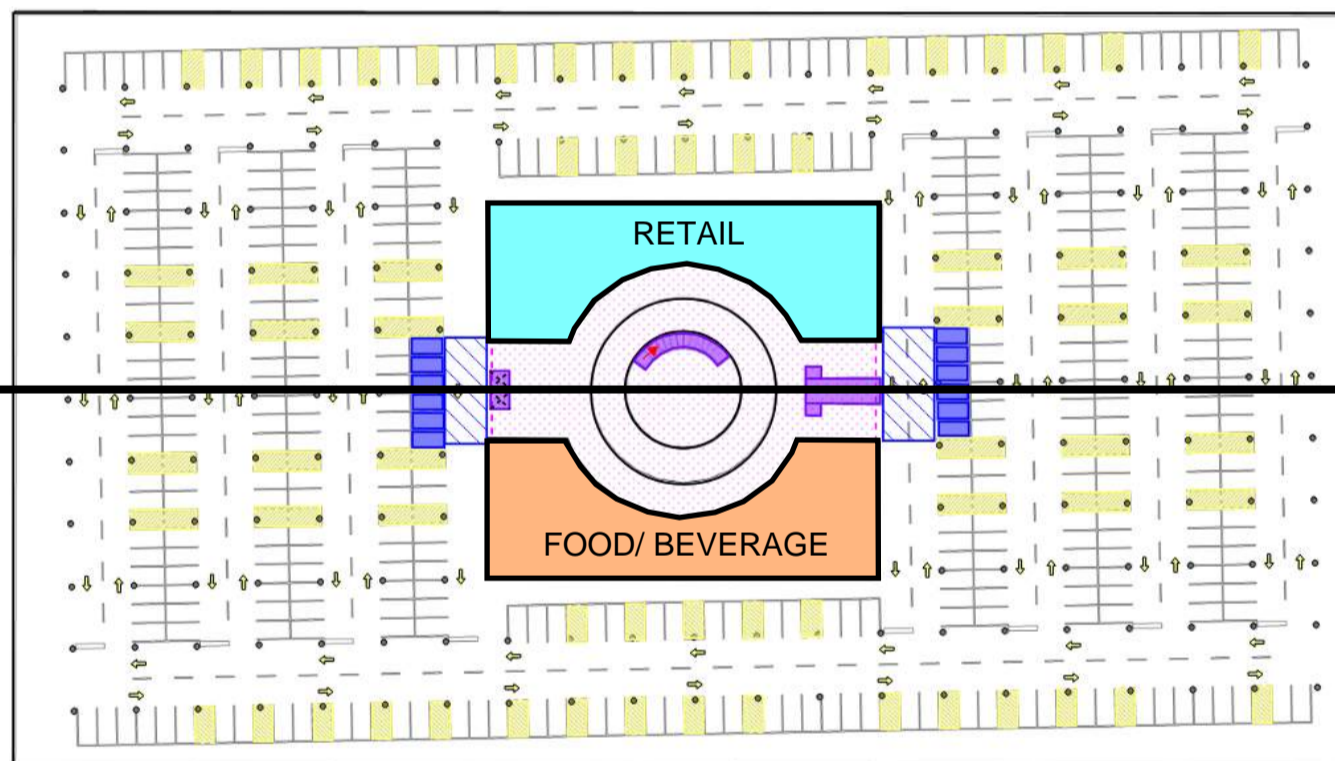
Historical Photo -1918



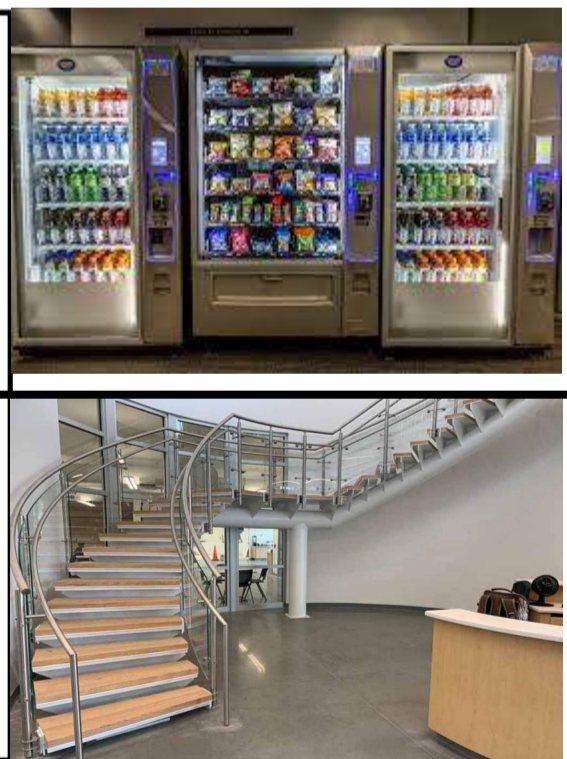
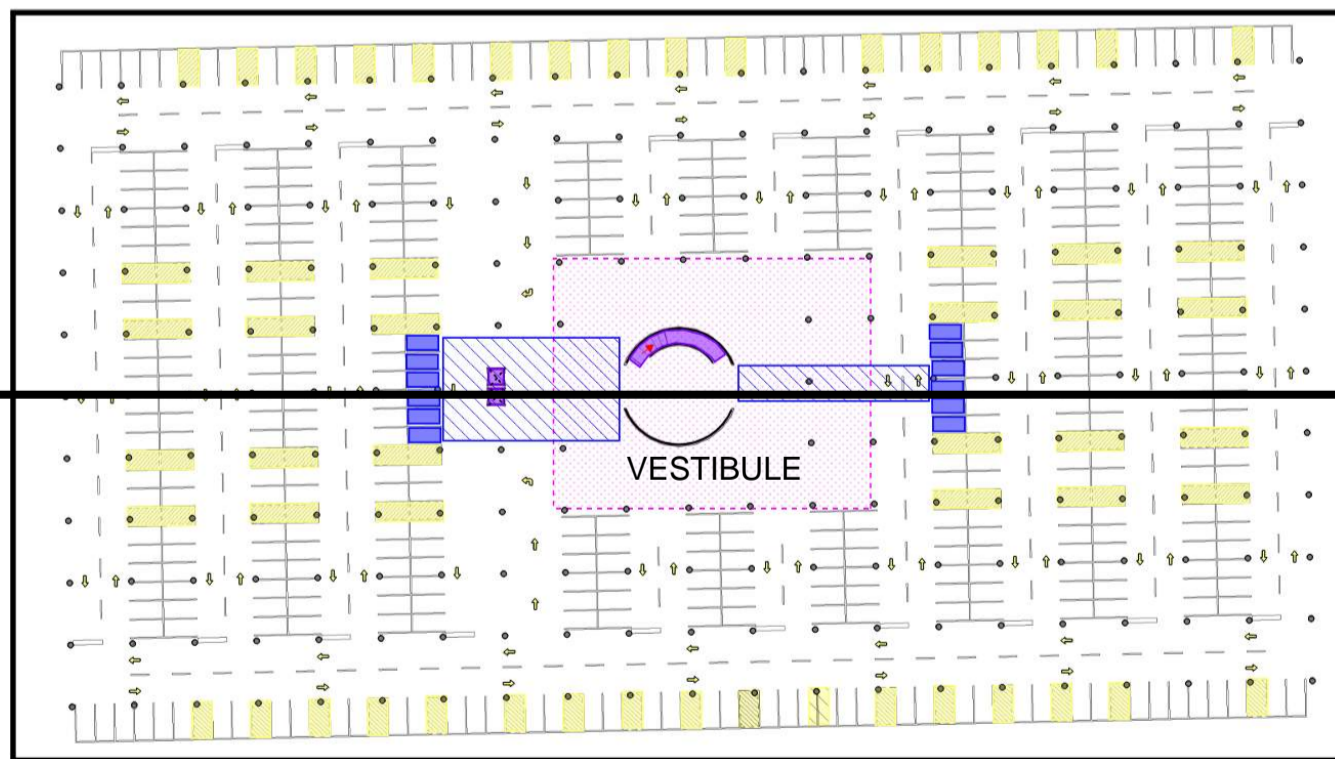
Historical Photo -1992



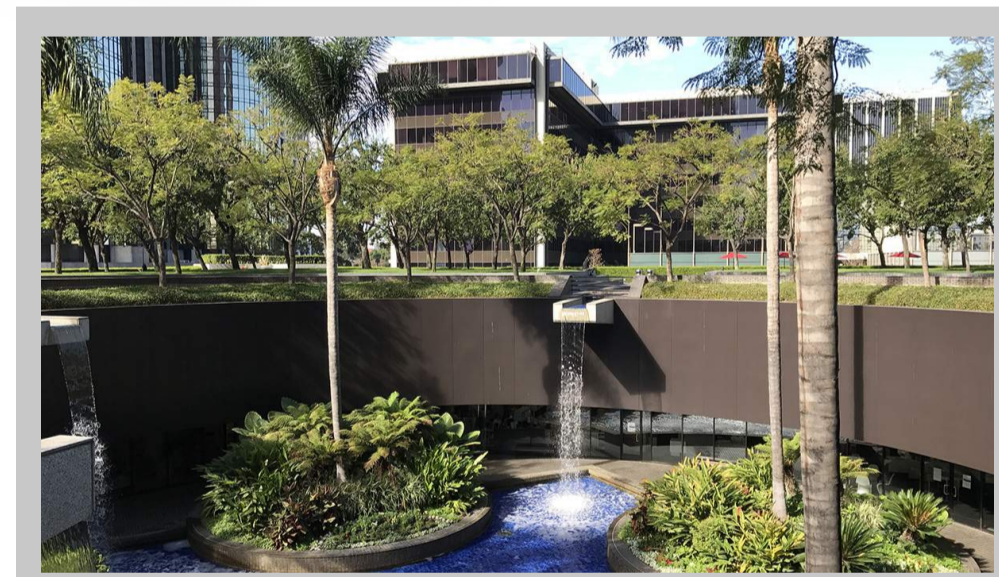
B1



B2

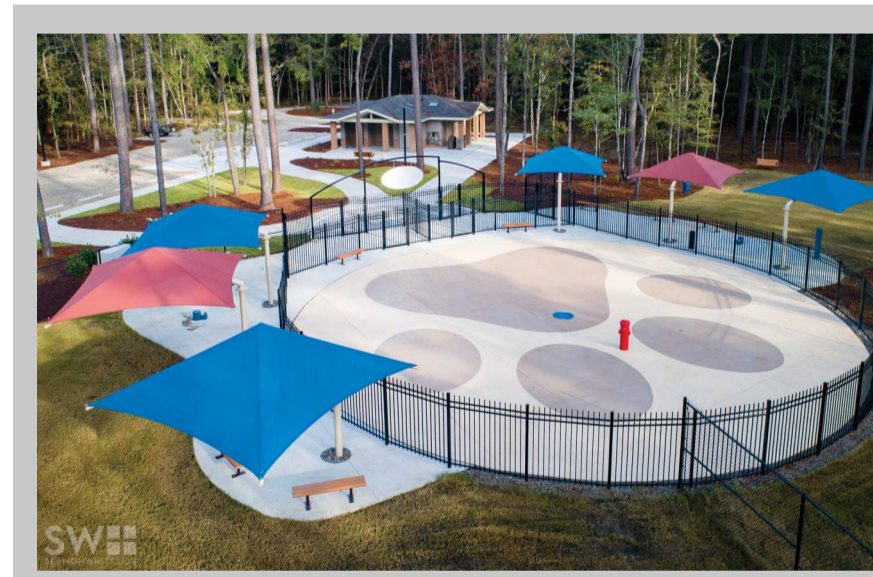


B3



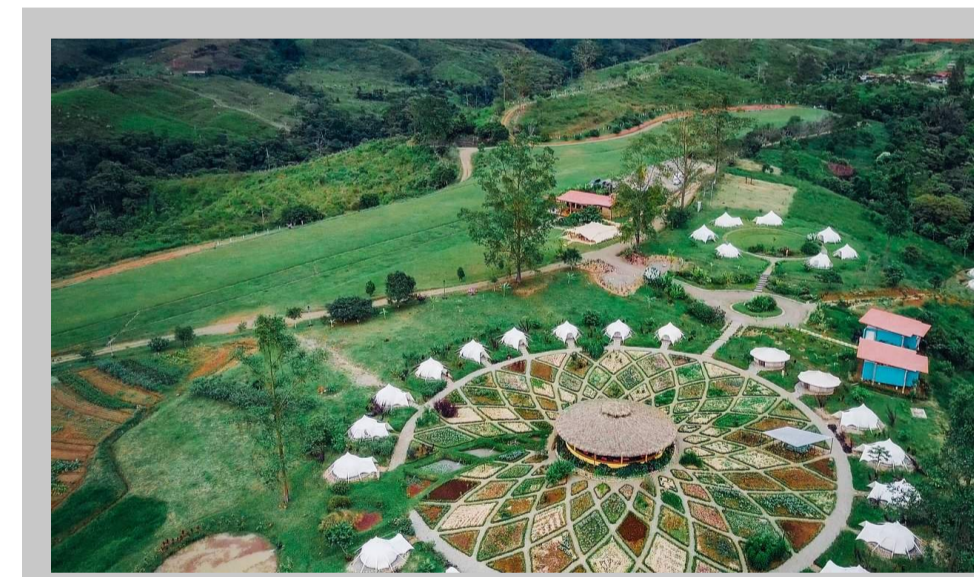
Bank of America Park in Los Angeles is an inspiration due to natural exposure of sunlight on both levels through a central oculus.

A



Charleston County Park was an inspiration because of the playful design that incorporated dog-related graphics into the design.

B



Kinkara (Costa Rica) was an inspiration because of the radial pattern of the gardens.

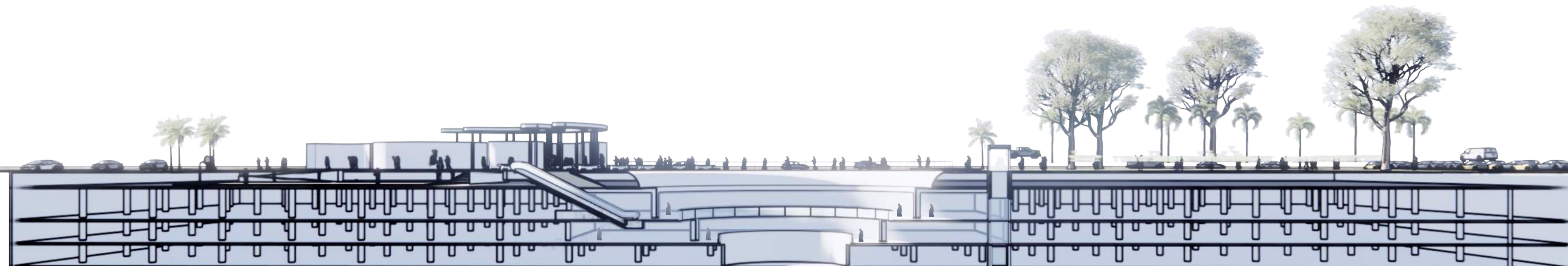
C



The above renderings of the skate park shows the playful nature of the space

D

Ground Floor
Sub-floor level
Lower level - B1
Lower level - B2
Lower level - B3



SECTION